



RUST STOPS HERE.

2015 VOL. I



**TANK
SEALERS**



**RUST
PREVENTION**



**CLEAR
COAT**

WELCOME TO KBS COATINGS!

KBS Coatings was founded in the heartland of America by key personnel having collectively over 85 years of experience in coatings formulation, manufacturing & distribution, and have combined this unparalleled experience and comprehensive capabilities in addressing the coatings requirements across all industries. With our commitment to research, ability to evolve and innovate, high tech manufacturing, and revolutionary rust stopping products, KBS Coatings has developed worldwide success and is now available in 10+ countries and continues to gain popularity and is quickly becoming the standard by which all other rust coatings are judged. Outstanding products manufactured in the USA offering permanent results have placed KBS Coatings at the forefront of rust prevention solutions for literally thousands of different types of applications world-wide.

THE KBS 3 STEP SYSTEM

Q – I’m getting ready to seal some rusted bare metal as well as some brand new metal using **RustSeal**. Is the cleaning & prepping with **KBS Klean & RustBlast** really necessary? It seems like a lot of work.

A – We’re sure you’ve painted things that have survived the lack of prep before, but in reality the finished result would have been much longer lasting had you prepped smart. The two proven key components for long-term rust coating performance are:

- 1) Proper Metal Surface Preparation, which includes cleaning and etching.
- 2) Permanent Separation of Moisture & Oxygen from the Metal

Newly sandblasted surfaces require no prep other than blowing off loose dust & are the ideal choice for direct **RustSeal** application. Otherwise, the presence of corrosion & organic contamination will block & inhibit **RustSeal** or any coating from deeply penetrating & permanently adhering to the surface. Slight residues of grease, oil or fingerprints can ruin any good paint job. Even brand new metals have protective oils applied which will interfere with adhesion.

Our all inclusive Klean/Blast/Seal **3-Step System** is specifically formulated to ensure good prep, adhesion & finish. Simply put.... the cleaner the surface using **KBS Klean**, the more effective **RustBlast** will work and the deeper the **RustSeal** will penetrate into the open pores, to even out texture and permanently seal & protect the surface.



INDEX

3 Step System	2	DiamondFinish Clear	11
KBS Klean	3	Motor Coater	12
RustBlast	3	XTC - Xtreme Temperature Coating	13
RustSeal	4-5	Tank Sealer	14
Rust Prevention Kits	6-7	Tank Sealer Kits	15
Cavity Coater	8	KBS Strip	16
Fusion Self-Etch Primer	8	NuMetal Epoxy Putty	16
BlackTop	9	Disposable Gloves	17
KBS MAXX	10	Accessories	18-19

SATISFACTION GUARANTEED OR YOUR MONEY BACK!
Quite simply, if you don't believe our KBS products out perform the products you are currently using, we will refund your purchase price hassle-free.



KBS KLEAN / RUSTBLAST

STEP #1 KBS KLEAN

POWERFUL CLEANER/DEGREASER

KBS Klean is the critical first step in surface cleaning and meets the requirements to ensure that all contaminants have been eliminated from the surface. **KBS Klean** is a concentrated, water-based, biodegradable formula that is an excellent alternative to flammable solvents & hazardous chemicals for preparing your paint job with a clean surface. **KBS Klean** is water-based and can be diluted up to 10x it's volume.

- 8oz: \$6.95
- Quart: \$11.95
- Gallon: \$21.95
- 5 Gal Pail: \$89.95

Perfect for the home, garage, shop or plant to effectively remove dirt, grime, oils, lubricants, grease, waxes, scum, algae, road film and other contaminants.
Satisfaction Guaranteed!



APPLICATIONS:

- Steel • Iron • Fiberglass • Concrete • Plastics
- Painted Finishes • Galvanized • Aluminum
- Stainless Steel • Canvas • Vinyl • Nylon • Brass
- Automotive & Diesel Engines • Machinery Parts
- Car Frames • Heavy Construction Equipment
- Truck Trailers • Compressors • Holding Tanks
- Engine Room Equipment • Air Conditioner Systems
- Grease Traps • Floor Pans • Fuel Tanks
- Transmissions • Porcelain Sinks • Tubs • Asphalt
- Lawn Mowers • Tools • Ovens • BBQ Grills • Toilets & more!

FEATURES:

- ▶ *Guaranteed pre-paint performance*
- ▶ *Economical concentrated formula*
- ▶ *Low foaming, leaves no residue*
- ▶ *Non-flammable, no petroleum additives*
- ▶ *Non-corrosive, non-toxic*
- ▶ *Environmentally safe, phosphate-free*
- ▶ *Safe on non-ferrous metals like aluminum*
- ▶ *Powerful low temp cleaning action*

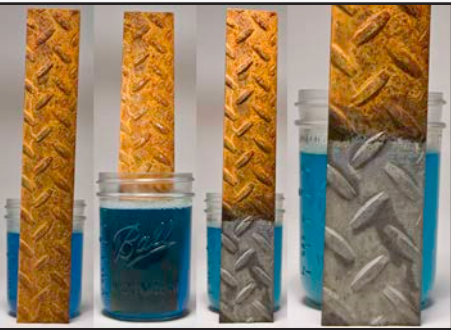
STEP #2 RUST BLAST

RUST REMOVER & PRE-PRIMING ETCH

Easy-to-use spray, submerge or brush application. Apply **RustBlast** full strength to a clean surface keeping it wet for 30-40 minutes or longer and watch rust, corrosion, metal oxides, and tarnishing vanish before your eyes!

- 8oz: \$7.95
- Quart: \$16.95
- Gallon: \$31.95
- 5 Gal Pail: \$144.95

RustBlast will gently etch the surface and leave a zinc phosphate coating to ensure additional rust protection & a strong bond with any paint. Satisfaction Guaranteed!



APPLICATIONS:

- Steel • Cast Iron • Brass • Aluminum
- Galvanized • Copper • Steel Alloys
- Fiberglass • Metal Casings
- Other Non-Metallic Surfaces • Concrete
- Rust Removal • Metal Etching
- Mill Scale Removal
- Pre-Paint Surface Treatment

FEATURES:

- ▶ *Removes & neutralizes rust*
- ▶ *Pre-paint primer & metal prep*
- ▶ *Provides etched surface profile for solid adhesion*
- ▶ *Leaves a zinc phosphate base coating*
- ▶ *Enhances welding conductivity*
- ▶ *Non-flammable, no petroleum additives*
- ▶ *Non-corrosive*
- ▶ *Water-based, biodegradable*

STEP #3 RUST SEAL

View Instructional Videos at
KBS-COATINGS.COM

APPLICATIONS:
Automotive: Chassis • Floor Pans
Wheel Wells • Fenders • Trunks • Engines
Suspension Parts • Axles • Roof Drains
Springs • Doors • Almost Every Part on a car
except the exhaust!

Marine: Engine Rooms • Hulls • Masts
Bilges • Heat Exchangers • Decks • Pumps
Chain Lockers • Fuel Tanks • Boat Trailers

Industrial: Heavy Transport • Steam Pipes
Sealing Concrete • Air Conditioning Repair
Fiberglass Repair • Rebar Coating • Steel Roof
Fuel & Waste-Water Treatment Tanks

Other Uses: Hand Rails • Support Beams
Lawn Equipment • Garage Floors
Pipe Work • Appliances
Lead-Based Paint Encapsulation

RUST PREVENTIVE COATING

RustSeal is an incredibly durable, single-component, ready-to-use, high solids content, rust preventive, non-porous coating with exceptional sealing properties. No other brand is tougher on rust!

RustSeal works by isolating the surface from moisture and oxygen, the ultimate causes of rust & corrosion.

RustSeal is the most cost-effective permanent solution for stopping rust & corrosion wherever it is a problem: automotive, industry, fleet, farm & more! It's technology that's unbeatable!

SATISFACTION GUARANTEED!

8oz (*12 sq.ft.): **\$17.⁹⁵**
Pint (*25 sq.ft.): **\$27.⁹⁵**
Quart (*50 sq.ft.): **\$39.⁹⁵**
Gallon (*200 sq.ft.): **\$134.⁹⁵**
5 Gal Pail: **\$551.⁹⁵**
*Coverages based on 2 coats



GLOSS BLACK

A strikingly rich black finish with a long lasting wet shine! A popular choice used in all automotive restoration applications including frames & chassis.



SATIN BLACK

A rich vibrant black coating that has a low luster uniform sheen which compares to OEM finishes! The perfect color used by those wanting an "original look" of a rock hard chassis semi-gloss finish.



SILVER

A rock hard silver metallic finish made for superior workplace protection. A perfect coating that can be used for reproducing the look & appearance of "bare steel!"



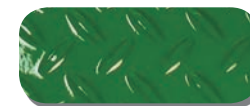
GREY

A medium grey colored coating that cures to a smooth diamond hard finish! Ideal for sealing & protecting steel, concrete, cinder blocks, warehouse floors, plywood and more!



OXIDE RED

A deep glossy red coating with high hide & coverage properties required for use in many types of industrial applications.



GUARDIAN GREEN

A rich glossy green coating enhanced with high levels of micronized corrosion barrier pigments used for their high hide & coverage abilities.



OFF-WHITE

The toughest white metal primer you'll ever use! Perfect color associated primer choice for all light colored topcoats.



CAT YELLOW

A full spec industrial yellow with micronized corrosion barrier pigments in a color well recognized on any work site as Cat Yellow.



SAFETY BLUE

A full spec industrial safety blue with micronized corrosion barrier pigments in a brilliant safety blue color.



GALVANIZED STEEL

We've replicated the look of an industrial galvanized matte finish with this super tough color of RustSeal.

RUSTSEAL FEATURES

- High surface tolerance for many different types of applications
- Apply directly over treated rust
- Single component formula
- High solids content
- Widest array of (10) non-porous color formulas
- Combines with atmospheric moisture to cure
- Excellent surface penetration & adhesion
- Forms permanent non-porous barrier against moisture & oxygen
- Waterproof coating strengthened by repeated exposure to moisture
- Mold & mildew resistant
- High abrasion & chemical resistance
- Repels fuels, oils, most acids & alkalis, & graffiti
- Won't crack, flake or peel
- Withstands temps up to 600°F (316°C)
- Brush, roll or spray application
- Superior flow & leveling
- Flexible coating allowing expansion & contraction
- Compatible with all paint systems
- VOC compliant & Lead-free



"This stuff is hard as a rock and also gives the vehicle that brand new look. It's nice to have a product that will protect and always look good when showing the car. Thanks"

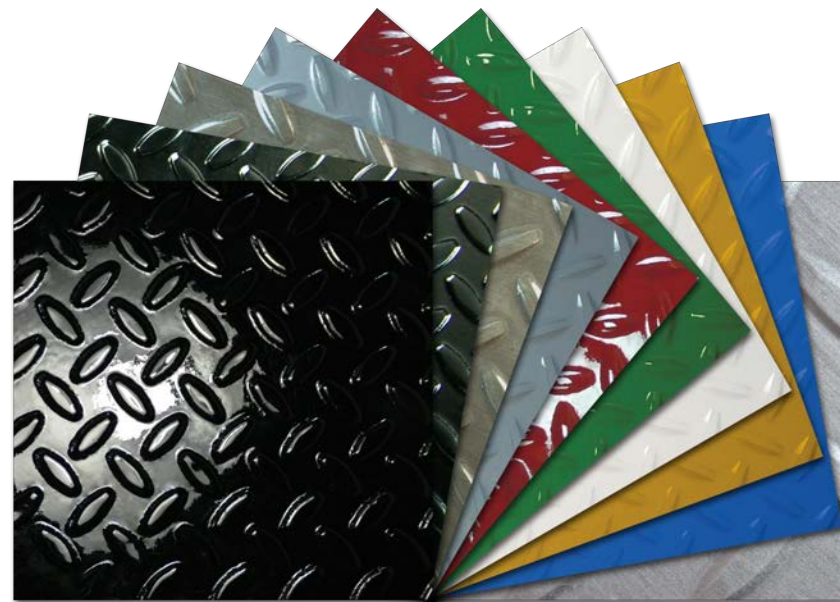
- Dennis V from Mid Michigan



FACT: ALL RUSTSEAL COLORS ARE 100% NON-POROUS!

"The best part about KBS ... their Restoration Kits. Our customers love being able to purchase kits specifically designed for their projects and the kits even include detailed directions making it easy on the customer to get Expert Results!"

- Mark D, Store Manager



SYSTEM SAMPLER

System Sampler: **\$21.⁹⁵**

Everything you need to get started & try out our **complete KBS system!** A full 1/2 pint of RustSeal will cover approx. 12 sq. ft. with 2 coats. Experience the quality & durability for yourself. A KBS best buy! Our complete system in one package!

Includes:

- (1) 8oz. KBS Klean (Step #1)
- (1) 8oz. RustBlast (Step #2)
- (1) 8oz. RustSeal (any color) (Step #3)
- (1) Pair Gloves
- (2) Brushes & (1) Stir Stick

View How-To's at KBS-COATINGS.COM



FRAME COATER KIT

Frame Coater Kit: **\$61.⁹⁵**

Our quart size 3-Step System kit includes enough products to Klean, Blast & Seal a full-size car or truck frame, or any 50 sq. ft. area with 2 coats of paint coverage. **Top quality protection** at a tremendous value! Detailed instructions included.

Includes:

- (1) Qt. KBS Klean (Step #1)
- (1) Qt. RustBlast (Step #2)
- (1) Qt. RustSeal (any color) (Step #3)
- (1) Pair Gloves
- (2) Brushes & (1) Stir Sticks



ALL-IN-ONE CHASSIS COATER KIT

All-In-One Chassis Coater Kit: **\$89.⁹⁵**

This complete kit takes our popular Frame Coater Kit to the next level. In addition to the complete **KBS 3-Step System**, this kit includes a pint of BlackTop topcoat for a permanent final finish which withstands dulling and fading caused by prolonged sunlight exposure.

Includes:

- (1) Qt. KBS Klean (Step #1)
- (1) Qt. RustBlast (Step #2)
- (1) Qt. RustSeal (any color) (Step #3)
- (1) Pt. BlackTop (gloss, OEM satin or flat)
- (1) 8oz. #1 Thinner & (1) Pair Gloves
- (2) Brushes & (2) Stir Sticks



TRUNK & FLOOR PAN REPAIR KIT

Trunk & Floor Pan Repair Kit: **\$122.⁹⁵**

A terrific solution that fits your budget! Here's a **Professional Restoration Kit** that will save you \$\$\$ versus the cost of replacement. Restore your floor pan, trunk, or pickup truck bed back to new and never deal with rust again! Easy-to-follow detailed instructions included.

Includes:

- (1) Gal. KBS Klean (Step #1)
- (1) Gal. RustBlast (Step #2)
- (1) Qt. RustSeal (any color) (Step #3)
- (1) lb. NuMetal Epoxy Putty (any color)
- (1) Sq. yd. BackBone Reinforcing Mesh
- (1) 8 oz. #1 Thinner
- (1) Paint Spout & (4) Pairs Gloves
- (1) Mask & (2) Brushes & (1) Stir Stick



4PAK CONVENIENCE QUART

4PAK Convenience Quart: **\$58.⁹⁵**

A full quart (32oz) of RustSeal in four user-friendly 8oz. cans. Each can provides 2 coats of coverage for an approx. 12 sq. ft. area. Open only what you need. **Best value** for small or multiple projects. **Mix or match colors.**



CONVENIENCE GALLON

Buy four quarts of **RustSeal** to maximize your savings and avoid waste. Best buy for multiple larger size projects. Each **RustSeal** quart provides 2 coats of coverage for an approx. 50 sq. ft. area. Mix or match colors.

4 Quarts (*50 sq.ft. ea.): **\$144.⁹⁵**

*Coverages based on 2 coats



MOTORCYCLE FRAME COATER KIT

Motorcycle Frame Coater Kit: **\$45.⁹⁵**

This complete Motorcycle Frame Paint Kit takes our popular System Sampler Kit to the next level. In addition to the complete **KBS 3-Step System**, this kit includes 8oz of BlackTop topcoat for a permanent final finish on your bike frame which withstands dulling and fading caused by prolonged sunlight exposure.

Includes:

- (1) 8oz. KBS Klean (Step #1)
- (1) 8oz. RustBlast (Step #2)
- (1) 8oz. RustSeal (any color) (Step #3)
- (1) 8oz. BlackTop (gloss, OEM satin or flat)
- (1) 8oz. #1 Thinner & (1) Pair Gloves
- (2) Brushes & (2) Stir Sticks



CAVITY COATER

THE ULTIMATE CAVITY WAX

Cavity Coater is a one-step, super-penetrating corrosion inhibiting coating (CIC) for long term protection on all metal surfaces.

Cavity Coater provides a self healing film which renders over 4000+ hrs salt spray protection...over 4 times the protection of conventional cavity waxes.

Cavity Coater gives long lasting protection for those hard to reach enclosed cavities such as rocker panels, boxed frames, inside doors & fenders, deck lids, tailgates...and more.



FEATURES:

- ▶ 4000+ Hours Salt Spray
- ▶ Creeps into Welds & Seams
- ▶ Wicks & penetrates where primers and topcoats cannot
- ▶ Water Displacing & Self Healing
- ▶ Forms Capillary Action
- ▶ Lubricating properties
- ▶ Protects against carbon fusion

APPLICATIONS:

Automotive: Boxed frames • Rocker panels • Inside doors
Inside car & trailer • Frame rails • Windshield cowl • Trunk lids
Hoods • Inside A-Posts • Inside B-Posts • Inside tailgates
Inside front & rear fenders • Back sides of bumpers • Weld seams

Anti-Seize/Anti-Corrosion: Nuts, bolts & screws • Shafts
Pipe fittings • Gaskets • Press fit assemblies • Valve assemblies
Taps & drills • Pump mountings • Packing glands • Chain drives
Metal fittings • Machinery

Cavity Coater (17.5oz Aero):	\$24. ⁹⁵
17.5 oz Aerosol w/36" Cavity Wand:	\$34. ⁹⁵
Cavity Coater (Quart):	\$34. ⁹⁵
Cavity Coater (Gallon):	\$99. ⁹⁵
Cavity Coater Remover (12oz Aero):	\$19. ⁹⁵
Cavity Wand (36" w/360° Tip):	\$13. ⁹⁵



REMOVER

Preps cavities, cleans wand for reuse & removes any excess coater.

FUSION SEP

FUSION SELF-ETCHING PRIMER

Looking for a **FAST** drying and easy-to-apply primer that allows you to quickly topcoat RustSeal or any other base coats? We have exactly what you need...**FUSION Self Etching Primer!**

This all-purpose grey self-etching primer is ideal for promoting adhesion between multiple surface coatings, including applications of topcoats & primers or over fully cured **RustSeal**. **Fusion** is also excellent for priming bare metals such as steel, brass, aluminum and most hard plastics.

Can be sprayed or brushed on almost any painted surface and is ready for a topcoat in 20-30 minutes. **Fusion** is available in a convenient aerosol as well as pints, quarts & gallons.

Satisfaction guaranteed!

FEATURES

- ▶ Promotes adhesion to almost anything
- ▶ Direct to metal
- ▶ Surface primer before bedliners
- ▶ Primer before using non-direct to metal coatings
- ▶ Bonds to fully cured RustSeal
- ▶ Ready to topcoat in 20-30 minutes

Note: Not a high build primer

15oz Aero:	\$22. ⁹⁵
Pint:	\$28. ⁹⁵
Quart:	\$44. ⁹⁵
Gallon:	\$139. ⁹⁵
5 Gallon:	\$589. ⁹⁵



BLACKTOP CHASSIS COATER

BLACKTOP CHASSIS PAINT

BlackTop is a tough, moisture-cured, UV stable coating primarily used for top coating surfaces previously sealed with RustSeal or any other paint/primer application. **BlackTop** is a high performance protective coating specifically formulated to withstand dulling and fading caused by prolonged sunlight exposure. **BlackTop** may be used alone as a resilient coating but it will not offer the ultimate rust protection unless it is used in combination with RustSeal.

For the best stop rust & ultraviolet protection, first apply RustSeal to permanently seal the surface and then topcoat with **BlackTop** for an incredibly tough and professional looking finish. Like RustSeal, **BlackTop** dries to a rock hard yet flexible coating that can be readily applied to chassis, coil springs and light weight panels. **BlackTop** also has high heat resistance and can be applied to almost all automotive applications except exhaust systems. **Satisfaction Guaranteed!**

Now In AEROSOL



APPLICATIONS:

Automotive & Truck Chassis • Industrial Machinery
Engine Compartments • Suspension Components
Floor Pans & Trunks • Wheels & Rims
Wrought Iron Railings • Fire Escapes

FEATURES:

- ▶ Single component formula
- ▶ Permanent UV stability
- ▶ No chalking or fading
- ▶ Rock hard permanent topcoat
- ▶ Flexible coating which expands & contracts
- ▶ High temp resistance
- ▶ Non-porous coating
- ▶ Superior flow & leveling
- ▶ Apply by brush or sprayer

12oz Aero:	\$22. ⁹⁵
8oz:	\$21. ⁹⁵
Pint:	\$29. ⁹⁵
Quart:	\$47. ⁹⁵
Gallon:	\$179. ⁹⁵
5 Gallon:	\$699. ⁹⁵

*Available in Gloss, OEM Satin & Flat Finishes.

KBS MAXX

ALL NEW!

HIGH PERFORMANCE, ULTRA DURABLE, HIGH SOLIDS, LOW VOC, LOW HAPS, 2K TOPCOAT

KBS MAXX is a superior performance, two-component, low VOC, low HAPs polyurethane topcoat. Specifically designed for the automotive, agricultural, fleet refinishing, marine, and heavy industrial equipment markets.

KBS MAXX offers excellent gloss and color retention as well as superior impact resistance, while providing fast drying characteristics. An excellent coating for the OEM marketplace looking to provide an automotive quality look and finish in a single stage, two-component system.



Quart: **\$54.⁹⁵**
Gallon: **\$189.⁹⁵**
5 Gal Pail: **\$799.⁹⁵**
*Includes Activator

Stock Colors (Custom Colors Available)

ARCTIC WHITE

SCHOOL BUS YELLOW

DAYTONA YELLOW

SILVER METALLIC

ORANGE GLOW

INFRA RED

BLUE MAYHEM

CRAZY PLUM (METALLIC)

HOT ROD BLACK (Low Gloss)

PITCH BLACK (High Gloss)

*Due to print variations, colors are not exact.

APPLICATIONS:

Cars • Motorcycles • Wheels • Bicycles
Commercial Vehicles • Snow Plows
Fleet and Municipal Vehicles
Tractors • Agricultural Equipment
Construction Machinery • Trains
Boats & Yachts • Personal Watercraft
Woodwork • Tools • Doors • Aerospace

FEATURES:

- ▶ MAXXimum Gloss Retention
- ▶ MAXXimum Color Retention
- ▶ MAXXimum Impact Resistance
- ▶ MAXXimum Weather Resistance
- ▶ Chemical Resistant
- ▶ Outstanding Adhesion
- ▶ Superb Opacity
- ▶ Excellent Flow
- ▶ Fast Drying
- ▶ Single Stage
- ▶ High Solids Coating
- ▶ Custom Colors Available

CLEAR DIAMOND FINISH

DIRECT TO METAL

DIAMONDFINISH CLEAR

DiamondFinish Clear is a long lasting, moisture cured top coat, designed to add body, depth and rich gloss to any existing top coat.

Guaranteed never to yellow or crack, **DiamondFinish Clear** can also be used as a standalone sealant for high weather areas such as wood, concrete, porcelain or on bare metals like polished chrome or aluminum.

DiamondFinish Clear is very durable due to its high solids content, but it will also remain permanently flexible. It can be applied by brush, roller or conventional spray gun, and will always have excellent flow out.

Unlike other clear coats, all of the hardening components are already contained in **DiamondFinish Clear**, so there is no measuring and no mixing.



4oz: **\$19.⁹⁵**
Pint: **\$36.⁹⁵**
Quart: **\$54.⁹⁵**
Gallon: **\$189.⁹⁵**
5 Gallon: **\$769.⁹⁵**

HEADLIGHT RESTORE KIT



Headlight Restore Kit: **\$21.⁹⁵**

A terrific solution for cloudy headlight lenses. This kit includes everything you need to restore 4 or more headlight lenses which drastically increases the visibility of fogged, yellowed, cloudy, or hazy dull looking headlights and drastically improves their performance. Easy-to-follow detailed instructions included.

Includes:

- (1) 8oz. KBS Klean
- (1) 4oz. DiamondFinish Clear
- (1) Pair Gloves & (1) Scuff Pad
- (2) Brushes & (1) Stir Stick



APPLICATIONS:

Concrete • Porcelain • Polished Chrome
Copper • Aluminum • Plastic

IDEAL FOR:

Protecting Pre-existing coatings
Aluminum fitting and parts • Graffiti proofing
Aluminum wheels and fuel-tanks
Automotive Finish Protection

FEATURES

- ▶ Over 60% Solids
- ▶ Direct-To-Metal Application
- ▶ Recoat in 1-2 hours
- ▶ Single Part Formula
- ▶ Tougher and Harder than 2 Part Clear Coats
- ▶ Simple Brush or Spray Application
- ▶ Self Leveling (No brush Marks)
- ▶ Permanent UV Stability
- ▶ High Temperature resistance suitable for Motors and Brake Callipers
- ▶ Extreme Chemical Resistance against acids or any type of fuel
- ▶ Seals both Paints and Metals
- ▶ Seals Ferrous and Non-Ferrous metals
- ▶ Breakthrough High Solids Coating Technology
- ▶ Graffiti Proof

ALL NEW!

MOTOR COATER

MOTOR COATER ENGINE ENAMEL

ENGINE PAINT

Motor Coater is easy to apply, offers superb coverage and yields a self-leveling professional looking finish brushed or sprayed. **Motor Coater** provide deep, rich pigmented colors for excellent coverage.

Your engine will be a show stopper at this DIY price...too bad it's kept under the hood!



Now In AEROSOL

12oz Aero: \$22.95
Pint: \$23.95



CHEVY ORANGE	ALUMINUM	T-BIRD RED	GLOSS BLACK	CORPORATE BLUE
PONTIAC METALLIC BLUE	WHITE	STREET HEMI ORANGE	FIRE RED	FORD DK BLUE
DAYTONA YELLOW	VELVET BLACK	FORD GREEN	CHRYSLER BLUE	CADILLAC DK BLUE
OLDS GOLD	OLDS BRONZE	CHEVY BLUE	PONTIAC LIGHT BLUE	BUICK GREEN
MG GREEN	BUICK TURQUOISE	CHRYSLER TURQUOISE	AUSTIN HEALEY MOSS GREEN METALLIC	MG MAROON
CHEVY DARK CHARCOAL	64-67 RAMPART RED	68 CARAVELLE METALLIC BLUE	69-72 AMC ENGINE METALLIC BLUE	73-81 AMC ENGINE BLUE

*Due to print variations, colors are not exact.

APPLICATIONS:

Car • Tractor • Boat • Motorcycle • ATV
Lawn Mower • Power Plants Chain saws
Brake Calipers • Brake Drums

FEATURES

- ▶ Withstands temps up to 450° F
- ▶ Vibrant color & retention
- ▶ Oil & gas resistant
- ▶ Will not blister, flake, crack or peel
- ▶ Self-leveling: Brush or Spray
- ▶ Great for Brake Calipers Too!



Complete Kit: \$54.95

Includes:

- (1) Qt. KBS Klean
- (1) Qt. RustBlast
- (1) Pt. Motor Coater
- (1) 8oz. #1 Thinner
- (1) Pair Black Gloves
- (1) Brush & Stir Stick



HEAVY DUTY MACHINERY COLORS NOW AVAILABLE!

Quart: \$38.95

DETROIT DIESEL ALPINE GREEN	OLD CUMMINS GOLD
CUMMINS BEIGE	CAT YELLOW

XTC - XTREME TEMPERATURE COATING



APPLICATIONS:

Engines • Manifolds • Mufflers • Headers
Stoves • Stove pipe • Heaters or Furnaces • Kilns
Ovens • Compressors • Turbines • Piping
Process vessels • Heat exchangers
Free Standing Fire Place • BBQ Grill

XTC - XTREME TEMPERATURE COATING

KBS Coatings is pleased to introduce **XTC - Xtreme Temperature Coating** formulated to the same industrial maintenance strength you've come to expect from KBS.

Offered in **(9) colors**, **XTC** is a great choice for Headers and Exhaust Manifolds or any high temperature part. **XTC** is rated to an industry leading 1500°F/812°C. With the added thermal shock resistance, you'll get repeated cycles of heating and cooling without any loss of finish.

XTC provides good corrosion resistance, but if you're looking for the ultimate in protection, combine **XTC** with our new **XTC Zinc Primer**!



CAST IRON GREY

JET BLACK

STAINLESS STEEL

ALUMINUM

FLAME BLUE

OFF-WHITE

PURE WHITE

ROCKET RED

CHARCOAL METALLIC

FEATURES

- ▶ Easy to apply
- ▶ Guaranteed not to burn off
- ▶ Withstands continuous temps up to 1500° F/816° C
- ▶ Will not peel, flake or chalk
- ▶ Combine with XTC Zinc Primer for excellent rust protection
- ▶ Outstanding resistance to thermal shock
- ▶ Reduces underhood temperatures & reduces exhaust manifold surface temperatures
- ▶ Improve exhaust gas velocity which increases Horse Power
- ▶ 8oz can typically covers up to three sets of manifolds



Size	Jet Black, Cast Iron Grey Charcoal Metallic Off-White & Flame	Aluminum Pure White Rocket Red Stainless Steel
12oz Aero	\$19.95	\$19.95
8oz	\$19.95	\$24.95
Pint	\$30.95	\$38.95
Quart	\$55.95	\$68.95
Gallon	\$179.95	\$199.95
5 Gallon	\$765.95	\$895.95

*Quart Kits & Gallons Kits Not Shown

Size	XTC Silicone Zinc Primer
12oz Aero	\$19.95
Quart Kit	\$97.95
Gallon Kit	\$349.95



GOLD STANDARD TANK SEALER

GOLD STANDARD TANK SEALER

KBS Coatings manufactures the most respected and trusted gas tank sealer in the industry today! Not only do we think of it as the NEW gold standard of sealers but we named it so!

Gold Standard Tank Sealer is a superior, single component, ready-to-use sealer formulated for coating the inside of metal, aluminum & fiberglass tanks.

Widely recommended & easy-to-use, this single application coating cures into a tough fuel impervious seal. The entire tank including pinholes & weld seams are permanently sealed to prevent the return of rust, corrosion & clogged carburetors. Yet amazingly, this rock hard interior remains flexible to withstand vibration and the repeated expansion & contraction of the tank! Other sealers are little more than paint or adhesive-type coatings which have poor sealing abilities especially when exposed to today's fuels.

Wisely choose Gold Standard for an incredible long lasting seal! Satisfaction Guaranteed!

FEATURES

- Silver metallic permanent coating
- Eliminates all rust & corrosion
- Impervious to all fuels, alcohol additives & most solvents
- Permanently seals pinholes & weld seams
- Flexible to expand & contract
- Non-flammable
- Environmentally safe
- Contains no Methyl Ethyl Ketone



8oz: **\$13.⁹⁵**
Pint: **\$23.⁹⁵**
Quart: **\$38.⁹⁵**
Gallon: **\$109.⁹⁵**
5 Gallon: **\$469.⁹⁵**

View Instructional Videos at
www.KBS-COATINGS.com

APPLICATIONS:

Steel, Aluminum & Fiberglass Fuel Tanks
Oil Tanks • Utility Tanks • Diesel Tanks
Non-Potable Water Tanks

FUEL TANK SEALER KIT

Complete Kit: **\$68.⁹⁵**

The Auto Fuel Tank Sealer Kit contains everything you need to clean, prep & permanently seal up to 25 gallon tank. Detailed instructions included. Satisfaction guaranteed!

Includes:

- (2) Qts. KBS Klean (Step #1)
- (1) Qt. RustBlast (Step #2)
- (1) Qt. Gold Standard (Step #3)
- (1) Pair Gloves & (1) Stir Stick



LARGE CYCLE TANK SEALER KIT

Complete Kit: **\$46.⁹⁵**

Larger version of our 3-Step cost savings tank kit for the repair of motorcycles, generators, lawn mowers, tractors, snowmobiles, or other small tanks up to 12 gallons. Detailed instructions included. **Satisfaction guaranteed!**

Includes:

- (1) Qt. KBS Klean (Step #1)
- (1) Qt. RustBlast (Step #2)
- (1) Pt. Gold Standard (Step #3)
- (1) Pre-cut Piece of BackBone Mesh
- (1) Pair Gloves & (1) Brush & (1) Stir Stick



CYCLE TANK SEALER KIT

"I tried this product myself ... WORKED GREAT!!!!"

-Dave Stewart, Product Specialist for JP Cycles

Complete Kit: **\$41.⁹⁵**

A great 3-Step cost savings kit designed for the repair of motorcycles, generators, lawn mowers, tractors, snowmobiles, or other small tanks up to 5 gallons. Detailed instructions included. **Satisfaction guaranteed!**

Includes:

- (1) Qt. KBS Klean (Step #1)
- (1) Qt. RustBlast (Step #2)
- (1) 8oz. Gold Standard (Step #3)
- (1) Pre-cut Piece of BackBone Mesh
- (1) Pair Gloves & (1) Brush & (1) Stir Stick



WORKING ON A TANK WITH A PREVIOUS LINER?

When that other brand sealant fails and you need to get back on track, get yourself a **PLUS** kit, which contains everything our normal cycle kits would **PLUS** a quart of KBS Strip (pg 16) our industrial strength aircraft stripper, to quickly remove failed sealers.

Cycle Tank Sealer **PLUS** Kit: **\$51.⁹⁵**
Large Cycle Tank Sealer **PLUS** Kit: **\$56.⁹⁵**



STRIP

PAINT REMOVER

SURFACES:

Furniture • Woodwork • Machinery • Masonry
Antiques • Floors • Cars & Boats • Graffiti

AIRCRAFT STRENGTH ... STARTS WORKING IMMEDIATELY!

KBS Strip is a heavy-duty paint, stain & varnish remover developed for use on wood, metal & masonry surfaces. This penetrating semi-gel formula clings to vertical surfaces like magic & removes even your toughest finishes fast & easy! The spray bottle applicator promotes even sealing coverage & deep penetrating power for removing stubborn layers of finishes even in hard to reach places! Another advantage of **Strip** is that it contains an evaporation sealant which drastically lowers the amount of odor. **Strip** can be easily washed off with water or solvent without leaving a residue.

ADVANTAGES:

- Gels when sprayed – clings to vertical surfaces
- Very low odor – contains evaporation sealant
- Safe for all woods and metals – leaves no residue
- Will not raise wood grain or harm patina

Quart: **\$17.⁹⁵**
Gallon: **\$41.⁹⁵**
(includes Bottle & Sprayer)



"Tried many other products to strip paint from a 1967 VW beetle. This was the only thing that actually worked."

-Misty K from Simi Valley, CA

REMOVES:

- Lead-based paints
- Polyurethanes
- Lacquers
- Shellacs
- Marine Finishes
- Tile & Carpet Adhesives
- Epoxies
- Latex
- Stains
- Varnishes
- Acrylics

NUMETAL

EPOXY PUTTY

NuMetal Epoxy Putty is an easy-to-use, two-part putty that mixes like clay but hardens like steel! **NuMetal** bonds, seals, fills, insulates, anchors, caulks and waterproofs. It cures without shrinking or sagging and can be drilled, tapped, sanded, primed and painted. **NuMetal** will not only stick to damp surfaces, but it will cure underwater!

FEATURES

- Bonds to almost anything
- Cures underwater
- Won't shrink or sag
- Can be applied to vertical surfaces
- Sand, drill or carve
- Paint, stain or gel coat
- Withstands temps up to 300°F (150°C)
- Easy 1:1 mix ratio
- Cut only what you need
- Soap & water clean up

Black NuMetal for Steering
Wheels & Plastic Repairs



1 lb: **\$22.⁹⁵**

**NOW AVAILABLE
in Black, White, Tan & Grey!**



INCLUDES: A & B bars, gloves & instructions.

APPLICATIONS:

All Metals • Wood • Ceramic • Porcelain PVC • ABS Pipe
Brick • Stone • Leaky Gas Tanks • Broken Fuel Lines
Steering Wheels • Manifolds • Plastic Parts/Knobs
Cracked Fiberglass • Marine Repairs • Pool Repairs
Insulate • Repair Holes in Decks or Tiles
Use like Modeling Clay • Carvings • Concrete Plaster
Tile Grout • Tool Handles

SEMPERFORCE BLACK NITRILE GLOVES

SemperForce black nitrile examination gloves are designed for demanding work environments where your safety and comfort are a must. A textured surface promises secure gripping capabilities. SemperForce black nitrile gloves are ideal for automotive, industrial, tattoo, and cosmetology applications.

FEATURES

- Highest tensile strength (21 mpa) of any nitrile glove we've ever offered! **VERY TEAR RESISTANT!**
- Textured fingertips - Enhanced dexterity and gripping capabilities
- Forms to your hand to allow full range of motion
- High puncture resistance
- Value Priced!



*Available in S, M, L, XL & 2XL

BEST FOR

- General shop use
- Auto Detailing, Painting, Mechanics, Oil Changes
- Auto Restoration, Brake Service Centers
- Tattoos

Box (50PR.)	Case (10 Boxes)
\$8. ⁹⁵	\$84. ⁹⁵

BLACK LIGHTNING DISPOSABLE GLOVES

Black Lightning Gloves provide superior protection with durability, now with breakthrough 5.5 pH Technology! Made to match healthy skin's natural 5.5 pH levels to ensure the MOST comfortable fit, for extended wear times.



FEATURES

- Made from 100% powder free Nitrile
- Unique formulation reduces excess perspiration
- Textured fingertips for precision handling
- High chemical resistance
- High puncture resistance

10 PR.	Box (50PR.)	Case (10 Boxes)
\$4. ⁹⁵	\$16. ⁹⁵	\$133. ⁹⁵



*Available in S, M, L, XL & 2XL

BEST FOR

- General shop use
- Diesel, Gasoline, Kerosene, Ethanol, Xylene, Turpentine
- Thinner, Petroleum Distillates
- Most low evaporation high flash solvents

HIGH VISIBILITY SAFETY ORANGE NITRILE GLOVES



*Available in S, M, L, XL & 2XL



10 PR.	Box (50 PR.)	Case (10 Boxes)
\$4. ⁹⁵	\$16. ⁹⁵	\$133. ⁹⁵

BLUE LIGHTNING GLOVES ULTRA THICK 15 MIL LATEX GLOVES

FEATURES

- Ultra Thick 15 mil glove! At 4 times thicker than standard exam gloves, it provides the ultimate barrier protection.
- Reduced Latex Protein! Additionally processed to remove extra latex proteins from the glove, which may reduce risk of latex allergies.
- Extra Long 12 inch cuff for added protection!
- Approved for Medical Use
- Super strength & Powder Free
- Textured Fingertips, Smooth Palm

10 PR.	Box (25 PR.)	Case (10 Boxes)
\$6. ⁹⁵	\$16. ⁹⁵	\$144. ⁹⁵



*Available in M, L & XL

WHITE LIGHTNING GLOVES

FEATURES

- Made from 100% Powder Free Latex
- Textured fingertips for precision handling
- High chemical resistance
- High puncture resistance
- Tapes & labels do not stick
- Additionally processed to remove most latex proteins
- Approved for Medical Use

10 PR.	Box (50 PR.)	Case (10 Boxes)
\$3. ⁹⁵	\$15. ⁹⁵	\$124. ⁹⁵



*Available in S, M, L & XL



8oz: **\$7.⁹⁵**
 Quart: **\$14.⁹⁵**
 Gallon: **\$39.⁹⁵**
 5 Gallon: **\$114.⁹⁵**

The ideal solvent for thinning of Industrial Maintenance coatings, our XTC Industrial Maintenance Primer, and our XTC Industrial Maintenance Coatings.



PRE-VAL

These handy little sprayers are perfect for getting **RustSeal** or **Blacktop** into those hard-to-get places. Each will spray up to a pint of paint. Remember to thin with **#1 Thinner**!



\$7.⁹⁵
 (includes sprayer & paint jar)

PAINT SPOUTS

One size fits all! A reusable easy-to-clean flexible spout that fits pint, quart & gallon size cans. Now pour paint easily without a mess! Keeps can grooves paint free so lids reseal cleanly & tightly which is a good idea when pouring **RustSeal** or **BlackTop**!! A great gadget that can be used as a brush wiper tool!



\$1.⁰⁰ Each



\$9.⁹⁵ Each

DRY AIR SPRAY GUN FILTERS

Never spray **RustSeal**, **BlackTop**, **KBS MAXX**, or **DiamondFinish** without this dry air filter. Not only does it absorb up to 1.0 fluid ounce of condensed moisture but it removes other trace contaminants like oil aerosols & dust particles which can occur in the hose downstream and affect your final finish. These disposable filters help prevent failures at the spray gun and operate @ 30cfm with almost no drop in pressure! Highly recommended even though your spraying system may be already equipped with moisture traps & filters.

BRUSHES

Quality brushes at a disposable price! Made with natural bristles for a superior paint pick up and a smooth uniform finish.



Qty	1/2"	1"	1 1/2"	2"	3"
6	\$4. ⁸⁰	\$5. ⁷⁰	\$6. ⁶⁰	\$7. ²⁰	\$11. ⁷⁰
12	\$9. ⁰⁰	\$11. ⁰⁰	\$13. ⁰⁰	\$14. ⁴⁰	\$23. ⁴⁰
24	\$17. ⁰⁰	\$20. ⁰⁰	\$24. ⁰⁰	\$28. ⁸⁰	\$46. ⁸⁰



\$6.⁹⁵ / Sq. Yd.

A thin pliable reinforcing fiberglass mesh that lays flat to form an invisible patch made of unbeatable strength & holding power. Easy to use. No bunching, bulging or stiff loose hairs to ruin your finish. Use in conjunction with **RustSeal** or **NuMetal** to repair holes and bridge gaps in metal, wood or fiberglass. **Contains 1 sq. yd.**



KBS GEAR SHORT SLEEVE T-SHIRT

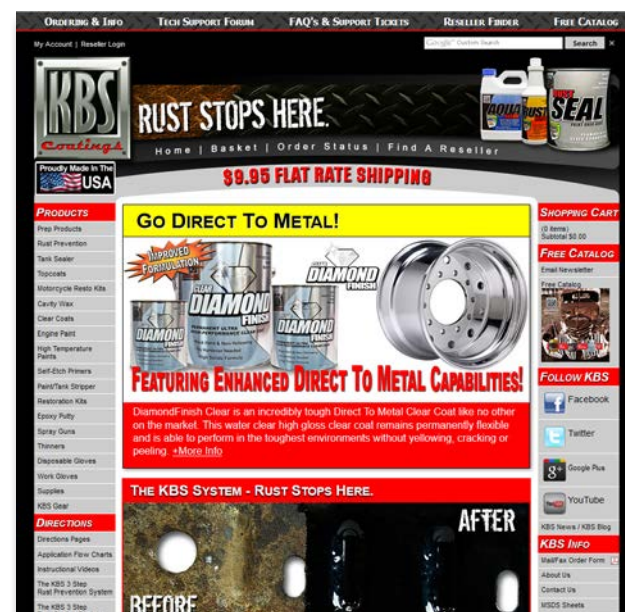
Due to demand by customers looking to express their KBS Pride, we announce our KBS Gear T-Shirts! Made of ultra comfortable 100% pre-shrunk cotton & available in popular colors such as Military Green, Charcoal, & Black. Each shirts proudly displays the KBS Logo and declares what all KBS users know ... **RUST STOPS HERE!** Sign up for our KBS e-mail list to be eligible for future promotions/rewards when you are seen wearing our KBS Gear.

\$9.⁹⁵ Each



Don't forget, all KBS Products are available in 5 Gallon Pails, Drums, or case quantities at a significant discount. Perfect for private contractors or industrial workforce applications.

KBS COATINGS WEBSITE



VISIT US ONLINE AT KBS-COATINGS.COM:

- Get the Latest KBS News & Product Releases
- View & Print Complete Product Instructions
- Live Tech & Sales Chat
- Customer Reviews
- How-To Videos & Guides
- Secure Online Ordering
- Before & After Project Photos
- Find Your Local Reseller
- Tech Support Forum

COMING SOON...

KBS Asphalt Undercoatings - Specifically formulated for easy application & high build capabilities. Available in water based formulas and solvent based formulas. Fortified with mineral fillers & emulsion asphalt to yield excellent barrier properties for underbodies of cars, trucks, RV's, trailers, and buses or any other application where water resistance is required.



KBS Coatings - Rust Stops Here.
1101 Cumberland Xing #180
Valparaiso, IN 46383

Order Toll Free: 1-877-548-9323
Order Online: KBS-COATINGS.COM
Order by Fax: 1-877-235-0590



We reserve the right to change our prices without prior notice.